



INSPIRE in the Netherlands

Ruby Beltman, Geonovum

24 June 2008

Presentation

- The Dutch geo-information playing field
- INSPIRE in the Netherlands:
 - The context
 - The approach
 - The programme

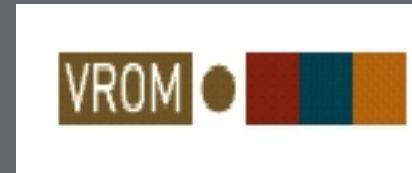
**Implementing
INSPIRE in the
Netherlands**

24 June 2008



The Dutch playing field

- Ministry of Housing, Spatial Planning and the Environment (VROM)
 - co-ordination of geo-information
- Council for geo-information (GI Council)
 - advisory council of Ministry of VROM
 - strategic agenda on geo-information in the Netherlands:
 - key geo-registration:
Addresses, Buildings, Parcels, Topography and more
 - accessibility and availability of public geo-informatie
 - Dutch NSDI and INSPIRE



June 2006

The Dutch playing field

- Geonovum
 - NSDI executive committee:
development, standardisation, innovation
 - mandated by the GI Council
- Many data providers and users:
 - national, regional, local
 - public and private

April 2007



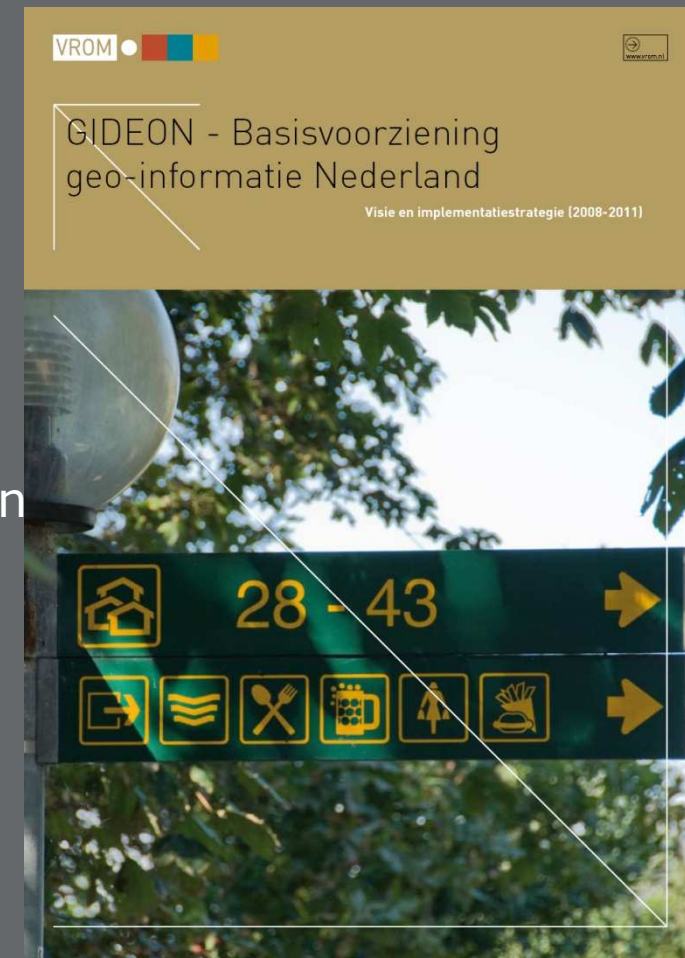
**Implementing
INSPIRE in the
Netherlands**

24 June 2008



The Dutch context

- National vision and implementation strategy for geo-information (GIDEON)
- Objectives (2008-2011):
 - geo-information accessible for citizens and private sector
 - private sector is able to create economic added value
 - integrated use of geo-information by the public sector
 - continues and ongoing NSDI development and innovation



The Dutch context

- Implementation strategies GIDEON:
 - INSPIRE as part of in bigger picture
 - Reinforcement and impulse of what needs to be done for INSPIRE
 - Tuning, direction, cooperation

Embedding geo in e-Government

Legal geo basic registration

INSPIRE implementation

Optimization of supply

Chain control

Value adding

Knowledge, innovation and education

The Dutch approach

- Ministry of Environment (VROM) is responsible party for implementation of INSPIRE in the Netherlands
- Implementation INSPIRE involves:
 - setting up and adapting Dutch legislation
 - developing and adjusting infrastructure
 - describing and harmonizing geo-information and metadata, and making them available (content)
 - stimulating the use of INSPIRE infrastructure and content



The Dutch approach

- Project for national INSPIRE legislation
 - under direction of ministry of Environment (VROM)
- Programme for implementing INSPIRE
 - Commissioned by VROM
 - Directed and co-ordinated by Geonovum
 - Jointly executed by stakeholders
- Based on Plan of Action INSPIRE in the Netherlands commissioned by GI Council drawn up by Geonovum in close co-operation with stakeholders

Programme INSPIRE in NL

Aims:

- guarantee Dutch contribution to developing INSPIRE implementing rules
- ensure implementation of INSPIRE directive and implementing rules, according to Dutch legislation on time

**Implementing
INSPIRE in the
Netherlands**

24 June 2008



Programme INSPIRE in NL

Approach:

- encouraging the responsible parties to pool their efforts by coordinating, stimulating and supporting INSPIRE data-providers and future users
- realizing communal facilities, joint understanding, vision and policies, peoples network, knowledge base, physical infrastructure, etc.

**Implementing
INSPIRE in the
Netherlands**

24 June 2008



Programme INSPIRE in NL

Management and Communication

NL contribution implementing rules

Implementation INSPIRE in NL:

- *Implementation in general*
- *Metadata and Geo-information*
- *Network and Portal*
- *Data exchange*
- *Monitoring and Reporting*

Use of INSPIRE in the Netherlands

Titel van de
presentatie (Beeld →
model → Diamodel)

Datum (Beeld →
model → Diamodel)

Programme INSPIRE in NL

Dutch contribution to INSPIRE implementing rules

- Stimulate, co-ordinate and support Dutch participation and involvement in drafting teams, thematic working groups, SDIC's, LMO, public consultations, INSPIRE committee, etc.
- Dissemination of information and insight on implementing rules amongst stakeholders

Programme INSPIRE in NL

Implementation of INSPIRE

- identify Dutch INSPIRE data and their providers
- help providers to describe and harmonize geo-information
- stimulate providers and users to build their parts of the INSPIRE infrastructure

Programme INSPIRE in NL

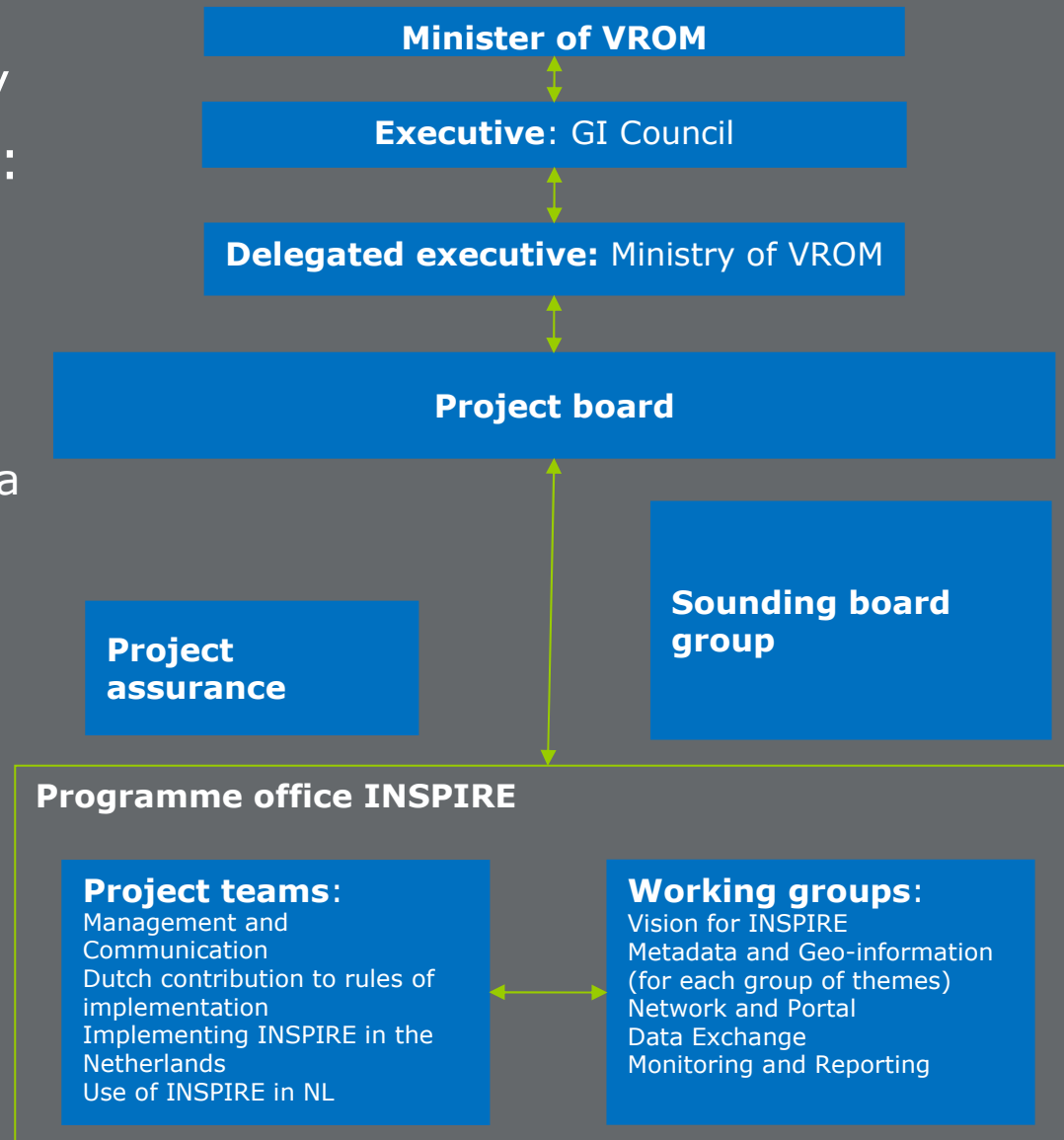
Realise communal facilities

- white paper on joint vision and interpretation of INSPIRE directive and its implementation in NL
- national INSPIRE infrastructure with portal, managed and connected to European portal
- general terms and conditions for the use of INSPIRE infrastructure, geo-information and metadata
- basic SLA between data-providers and users

The programme INSPIRE in NL

Jointly carried out by interested parties: data-providers, users, public and private sector, centres of expertise and umbrella organizations

- In action and by representation



The programme **INSPIRE** in NL

Current state:

- Up and running:
 - Dutch participation in implementing rules
 - Support project legislation

- Ready to start:
 - Preparation of programme



Barchman Wuytierslaan 10

P.O. box 508, 3800 AM Amersfoort, the Netherlands

+ 31 (0) 334 604 100

info@geonovum.nl

www.geonovum.nl

**Implementing
INSPIRE in the
Netherlands**

24 June 2008